



## Glock MOS Fastfire Mounting Instructions



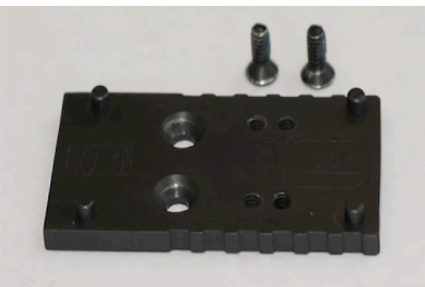
**Step 1:** Remove the original MOS slide plate.



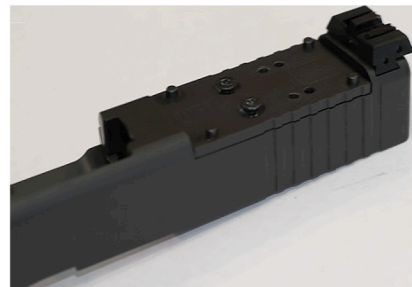
**Step 2:** Set aside the screws that were removed from the slide plate for use later on.



**Step 3:** Locate the Glock MOS Adapter-Set in your Glock packaging.



**Step 4:** Plate 01 is required to mount Fastfire III sights.



**Step 5:** Secure plate 01 to the Glock MOS slide with the provided short screws in the Glock MOS Adapter-Set packaging.



**Step 6:** Attach the Fastfire III optic to the Glock MOS plate 01 utilizing the four locating pins.



**Step 7:** Secure the FastFire 3 to the Glock MOS mounting plate using the longer screws set aside in Step 2 and two lock washers. Please contact customer service for the washers (1-888-440-0244)



**Step 8:** This completes the installation of the Fastfire III on the Glock MOS pistol.